

KnuckleHead

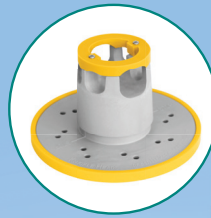
Rooftop Support System

INSTALLATION GUIDE

KnuckleHeads are tough, molded fiber-glass-reinforced nylon rooftop supports designed to keep equipment elevated to extend your roof's life and protect your investment. KnuckleHeads are adjustable for height and level and, can support up to 600 lbs. KnuckleHeads have undergone 10 years of exposure in the field without showing signs of weathering or deterioration.

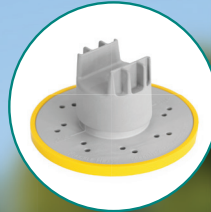
Five KnuckleHead designs are available depending on the application. Regardless of the design, all KnuckleHeads utilize the same Universal Base and install using the same basic steps. They can be loose laid, bonded using GREEN LINK Adhesive/Sealant or GREEN LINK Adhesive/Sealant combined with mechanical fasteners.

GREEN LINK
ENGINEERING SUSTAINABILITY



Lite Pipe KnuckleHeads

Support single 1-inch nominal pipe or two 1/2 inch nominal pipes. Lite Pipe Supports are commonly used for condensation pipes and electrical conduit.



Strut KnuckleHeads

Support all standard strut designs for installation of heavy equipment such as chillers, air conditioning units and other HVAC-related equipment.



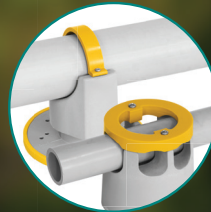
Heavy Pipe KnuckleHeads

Support larger pipes up to 3 in. outside diameter such as PVC, natural gas lines or water lines.



Paver KnuckleHeads

Support concrete paver tiles and composite decking to create access flooring, garden terraces and plaza decks.



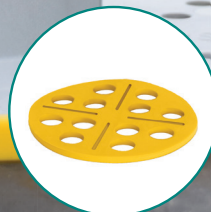
KnuckleStraps, KnuckleCaps

Where severe weather events are present or where code requires it, pipes and struts can be secured in KnuckleHead Rooftop Supports with custom engineered straps or caps molded from tough, weatherproof urethane, tinted "safety yellow."



KnucklePads

Soft, flexible polyurethane Knuckle Pads fit snugly around the Universal Base. Because they are slip resistant, they reduce movement and help protect the roof membrane.



PaverPads

Designed to fit over the Paver Support KnuckleHead, these polyurethane pads absorb vibration from operating HVAC equipment mounted on the roof.

The following steps feature a **STRUT** support KnuckleHead. **PIPE** and **PAVER** KnuckleHeads follow the same basic steps.



All KnuckleHeads use the same Universal Base and can be installed in one of three ways:

- 1 They may be loose laid.
- 2 For a more secure installation, they may be bonded directly to the roof surface using GREEN LINK Adhesive/Sealant.
- 3 Where high winds or seismic activity are prevalent, KnuckleHeads may be installed using both GREEN LINK Adhesive/Sealant and mechanical fasteners.

KnuckleHead INSTALLATION GUIDE

STEP 1 LAYOUT THE ASSEMBLY

Use a marker to indicate the location of all Universal Bases, when bonding the base with GREEN LINK Adhesive/Sealant, which is optional.



STEP 2 SURFACE PREPARATION

Using solvent such as rubbing alcohol, clean application area, removing dirt and oil.

NOTE: If loose laying the bases, then no cleaning is required. Set base into KnucklePad (OPTIONAL) and proceed to STEP 6.



STEP 3 APPLICATION OF ADHESIVE/ SEALANT (OPTIONAL)

If bonding the base to the roof membrane, apply Green Link Adhesive/Sealant to the bottom of the Universal Base. Using a notch trowel, comb the entire surface leaving a uniform, approximately 60-mil layer of GREEN LINK Adhesive/Sealant.



STEP 4 PLACEMENT OF THE BASE (OPTIONAL)

Position the base in the marked area and press gently. GREEN LINK Adhesive/Sealant should squeeze out from the "rivet holes."



STEP 5 MECHANICAL ATTACHMENT

(OPTIONAL)

If also mechanically attaching the Universal Base to the deck, engage the appropriate fastener into the deck. (KnucklePads are not utilized when mechanically attaching base). Apply GREEN LINK Adhesive/Sealant to the fastener head to prevent leaking.



CAUTION!

It is recommended to contact the roof system manufacturer to make sure all specifications and requirements are followed. **Failure to do so could void the roof warranty.**

STEP 6 INSTALLING EXTENSIONS

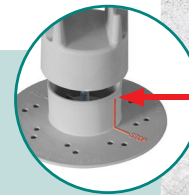
(OPTIONAL)

If the installation is to be elevated, slide the appropriate extensions into the base.

STEP 7 INSTALLING THE HEAD

Mate the KnuckleHead to the base (or extension) and level, if necessary.

NOTE: Rotate the head to the desired height, but do not elevate above the "stop" mark, which can compromise the integrity of the KnuckleHead unit.



STEP 8 PLACEMENT OF STRUT, PIPE OR PAVER

Set strut, pipe or paver onto the head, when using metal strut, apply GREEN LINK Adhesive/sealant to the strut head and press into place.

NOTE: If setting pavers, a GREEN LINK anti-vibration PaverPad can be set on the head.



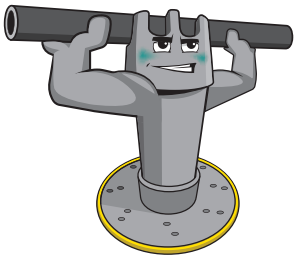
STEP 9 SECURING THE PLACEMENT

KnuckleStraps and Caps install using standard stainless steel sheet metal screws (included).





KNUCKLE UP!



GREEN LINK

ENGINEERING SUSTAINABILITY

5519 East Cork Street, Kalamazoo, MI 49048 USA | (269) 216-9229 | (888) 672-9897
 sales@greenlinkengineering.com | www.greenlinkengineering.com

CONTRACTOR DRIVEN!

Labor-saving, high in functional & aesthetic value



Made in U.S.A.

GREENLINK, Inc. was established to discover innovative solutions to higher performance and more sustainable construction. Our focus is designing and producing innovative polymeric architectural products which include the Knuckle-Head Rooftop Support System, as well as specialty products for clean rooms and other controlled environments. We work with contractors, architects, building owners and facility managers to engineer and produce the best possible solutions to meet the construction challenges of the 21st century. GREEN LINK is committed to processes and products that cause no harm to the environment or human life.