

KnuckleHead

Low-Profile Support Assembly for Mechanical Equipment

Each kit includes four Strut KnuckleHeads, two support rails, two equipment rails and the necessary hardware for assembly.

EASY TO INSTALL

Each kit takes less than 15 minutes to assemble out of the box

Add-ons available for electrical box mounting

Assembly can accommodate all mechanical equipment whether roof- or ground-mounted

ADJUSTABLE

Equipment rails slide to fit width of mounted equipment

ELEVATION

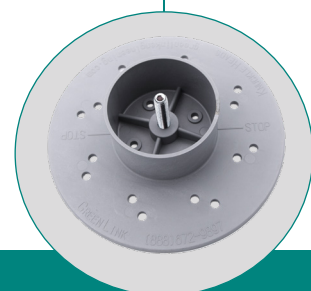
5 7/8" - 6 7/8" above the roof or ground surface

Supports up to 850 pounds per assembled unit

Equipment can be leveled by rotating the KnuckleHead

Green Link Adhesive/Sealant can be used to further secure the installation

ATTACHABLE
Universal Base features 4 holes for mechanical fastening



GREEN LINK
DESIGN



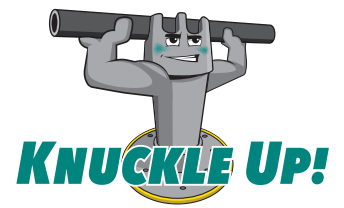
Made in U.S.A.

888.672.9897 | www.GreenLinkengineering.com
5519 East Cork Street, Kalamazoo, MI 49048 USA

Original design from the ground up with the contractor in mind, featuring innovative Green Link technology. All made in the U.S.A.

Contractor Driven!

KnuckleHead



Low-Profile Support Assembly for Mechanical Equipment

Green Link's Low-Profile Assembly is designed to support virtually every type of mechanical equipment when it is specified to be close to the roof surface. AC units, mini splits, transformers, condensers, heat pumps and related pipelines are typical of mounted equipment. The system rests on Strut KnuckleHead Supports, which can be free-standing or attached.

KIT CONTENTS

Bases

KnuckleHead Bases are composed of military-grade reinforced nylon which is strong, durable and weatherproof. Each base can support 600 pounds and features a vertical steel bolt for mounting Stanchion KnuckleHeads and four holes in the center for accepting mechanical fasteners.

Two base designs are available. The standard Universal Base features a 7-inch diameter and 38 square inches of surface area.

The Big Base features the standard Universal Base over-molded in the center of a larger urethane component featuring a 12-inch diameter and 113.1 square inches of surface area. The Big Base provides more stability at heights over 12 inches and greater load distribution, reducing point loading on the roof resulting from heavier equipment.

The Big Base features a tough, weatherproof, slip-resistant KnucklePad, which is molded onto the base. Compatible with all roof membranes including PVC, and tinted "safety yellow," this custom-engineered urethane pad protects the roof membrane, eliminating the need for slip sheets.



INSTALLATION

Attachment

The bases can be installed free-standing or attached. The Universal Base can be attached by driving screws through the four holes in its center directly into the roof deck. This secures the installation. Applying Green Link Adhesive/Sealant to the KnuckleHead Base further strengthens the installation.

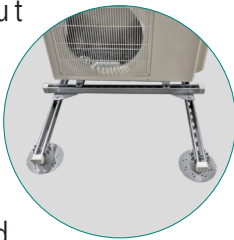
The Big Base can be attached in the same way, but in most cases, attachment is unnecessary because the larger surface area provides sufficient stability.

When the Universal Base is free-standing, KnucklePads can be placed on the bases to protect the roof membrane. Typically, ground installations are free standing on a concrete slab. Applying Green Link Adhesive/Sealant is optional for securing ground installations.

FEATURES

Out-of-the-Box Assembly

Once the Strut KnuckleHeads are positioned on the roof or ground surface, support rails can be inserted into the heads and



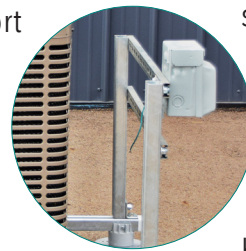
bolted into place. This creates a secure unified base frame. Equipment rails are then positioned along the support rails, adjust into the desired position, and are secured with brackets.

Custom Kits

The standard kits are 3' x 4' and 4' X 4', but Green Link can provide custom sizes. Supports can be cut to any length and width to build banks of any dimension.

Electrical Boxes

Because of the support assembly's sturdy design, electrical boxes can be mounted directly onto the frame using sections of strut bolted into place.



Leveling

Because HVAC equipment must be perfectly level to perform optimally, Strut KnuckleHeads can be rotated to adjust height.

Green Link Adhesive/Sealant is an environmentally proprietary formulation designed to adhere to the KnuckleHead Base as well as to most roof membranes including PVC, EPDM, acrylic and primed

TPO. The adhesive can be used to strengthen attached systems, or by itself without mechanical fasteners.

Elevated Support Assembly

Green Link offers a separate elevated mechanical support kit for equipment to be mounted up to 24" off the roof surface. This support system relies on KnuckleHead Stanchions, providing the basic structure for adding support rails and equipment rails. This system is also available in kit form and can be customized to order.

